



T500A Mk III

Features

• Ring-shaped pure magnesium diaphragm

The newly developed ring-shaped pure magnesium diaphragm has low squeal peculiar to metal, and realizes penetrating ultra-high frequency reproduction by adjusting the material thickness to optimize the surface treatment.

• Brass horn and equalizer with platinum coating

Precision cut cylindrical shape solid brass horn and equalizer are fitted. Platinum coated surface offers a natural and high transparent sound.

• Alnico internal magnetic circuit

Installed 2 layers Alnico magnets obtain a strong magnetic flux density, and the copper plated pole piece reduces the current distortion realizing a high definition audio reproduction.

• Gold plated copper speaker terminals and copper silver alloy internal wiring

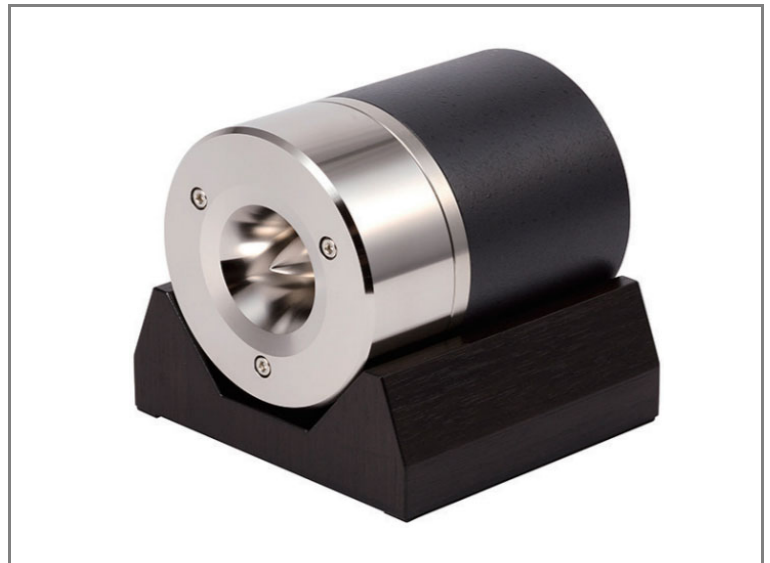
Input terminals use gold plated copper. An extra-thick $\phi 1.4$ mm copper silver alloy single wire is used for internal wiring to reduce sound deteriorations.

• Tungsten diaphragm ring

Diaphragm ring to support the diaphragm is made of tungsten sheet that has high damping effect to reduce un-wanted vibrations and sound deteriorations.

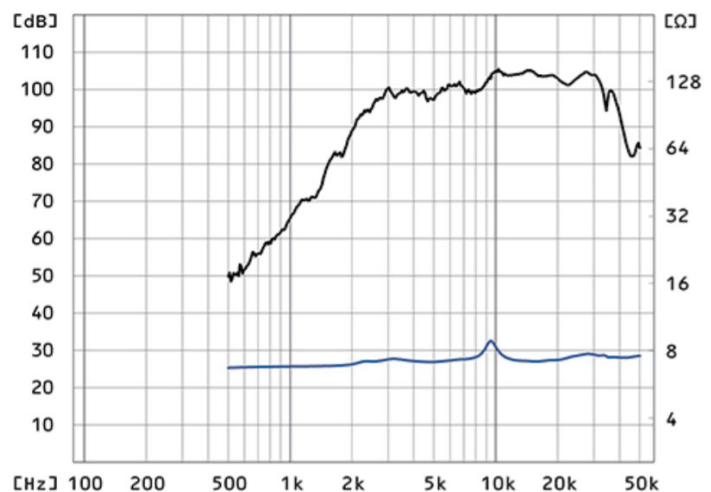
• Tweeter base with walnut veneer finish

A tweeter base comes as a standard accessory, which firmly supports the heavy tweeter. The base is finished in dark brown with beautiful and calm walnut veneer.



Frequency Response

/ Impedance

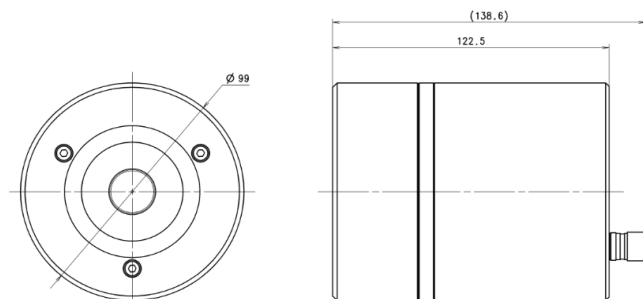


Specifications

Impedance	: 8 Ω
Reproduction Frequency Response	: 7kHz ~ 40kHz(-10dB)
S.P.L	: 104dB/W(1m)
Input	: 15W(NOM)
Cutoff Frequency	: 3.5kHz
Recommended Cross-over Frequency	: More Than 7kHz (-12dB/oct.)
Magnet Weight	: 480g/1.05lb(Alnico)
Net Weight	: 5,150g/11.35lb

Dimensions

/ Mounting Information



Overall Diameter	: 99mm / 3.9"
Depth	: 138.6mm / 5.45"