

Fostex®

LOW LEAKAGE FLUX TYPE FULL RANGE
SPEAKER UNIT

FE167E

Features

- 'ES cone' paper made of banana plant's fiber
- Ferrite magnet
- Repulsion type magnetically shielded circuit
- Newly designed center cap

Specifications

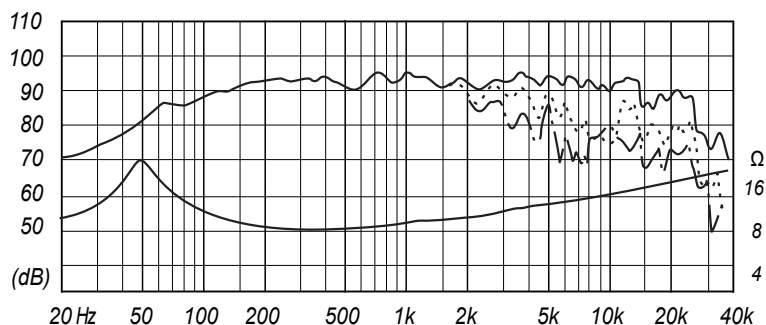
&

Thiele/Small Parameters

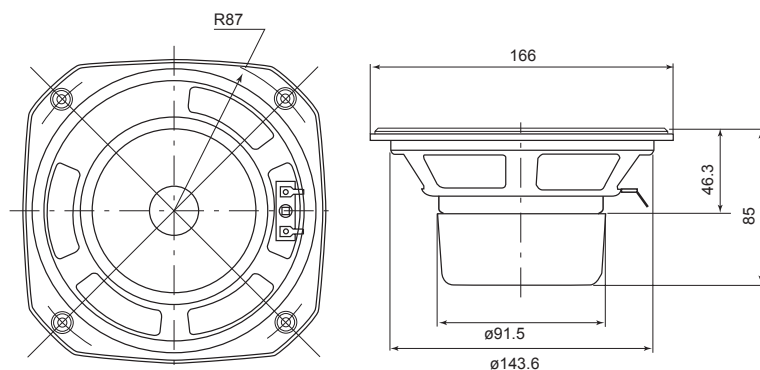
Size	:	160 mm / 6 in
Voice Coil Diameter	:	25 mm / 1 in
Cast / Stamped	:	Stamped
Impedance	:	8 Ω
Reproduction Frequency Response	:	f0 - 22 kHz
Sound Pressure Level	:	94 dB/W(m)
Rated Input	:	22 W
Music Power	:	65 W
Magnet Material	:	Ferrite
Magnet Weight	:	
(main)	:	240.1 g / 0.529 lb
(cancel)	:	121.8 g / 0.269 lb
Net Weight	:	1,320 g / 2.910 lb



Frequency Response / Impedance



Dimensions & Mounting Information

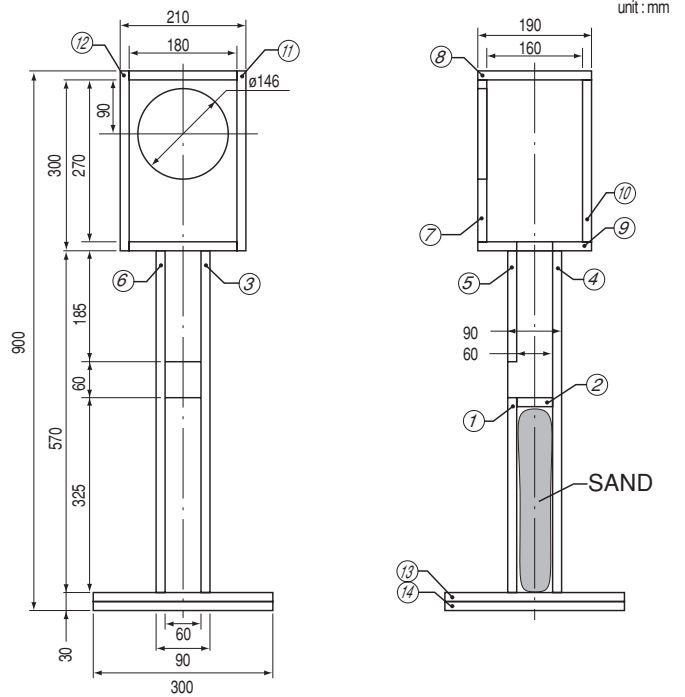


a	:	65 mm
D	:	130 mm
Sd	:	0.01327 m ²
Zn	:	8 Ω
Fs	:	51.5 Hz
Re	:	7.10 Ω
Le	:	n/a mH
Qms	:	4.63
Qes	:	0.33
Qts	:	0.31
Mms	:	6.68 g
BL	:	6.82 Telsa/m
Vas	:	35.94 L
Xmax	:	0.6 mm
Eff/η0	:	1.44 %
Cms	:	0.00145 mm/N
EBP	:	156

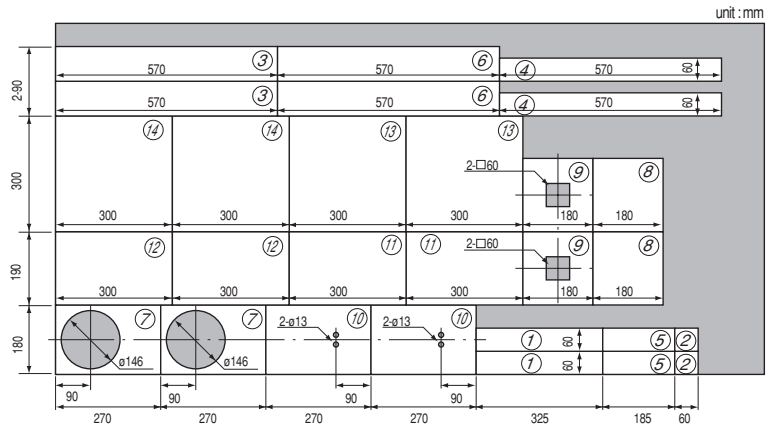
Overall Diameter	:	166 mm / 7 in
Baffle Hole Diameter	:	146 mm / 6 in
Depth	:	85 mm / 3 in

FE167E

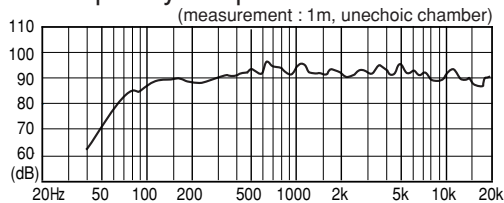
Recommended Bass Reflex Type Enclosure



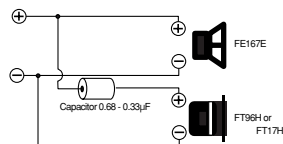
- Shown is an example of a FE167E bass reflex type enclosure.
- The stand serves as both speaker stand and bass reflex duct (port).
- Packed sand or other fill inside lower stand will improve stability and sound quality.
- This enclosure is designed to control low frequency and realize flat frequency response at all bandwidths.



Frequency Response



- Two way system using super tweeter is also recommended.
- 15mm thick plywood was used for the tested enclosure.



Recommended Standard Bass Reflex Type Enclosure

Example of FE167E standard bass reflex type enclosure. This enclosure has 15 liters capacity. You may try various external dimensions as long as the internal volume remains the same.

