

# FE83E

### Features

- 'ES cone' paper made of banana plant's fiber
- Newly designed center cap
- Ferrite magnet

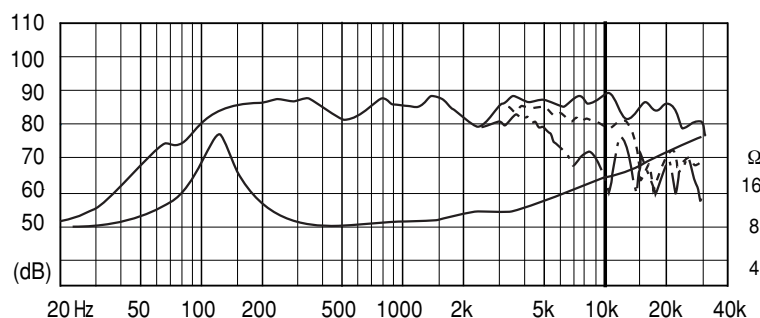


### Specifications & Thiele/Small Parameters

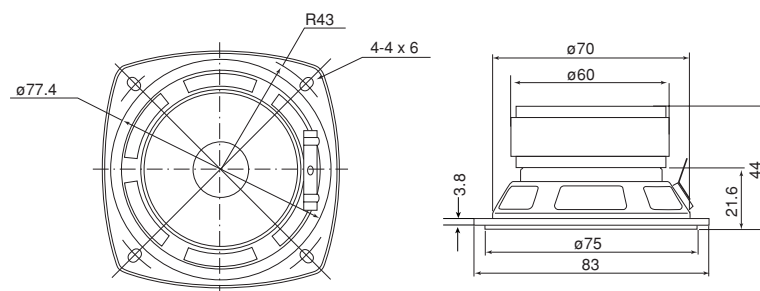
Size	:	80 mm / 3 in
Voice Coil Diameter	:	16 mm / 0.6 in
Cast / Stamped	:	Cast
Impedance	:	8 Ω
Reproduction Frequency Response	:	fs - 30 kHz
Sound Pressure Level	:	88 dB/W(m)
Rated Input	:	5 W
Music Power	:	10 W
Magnet Material	:	Ferrite
Magnet Weight	:	
(main)	:	140 g / 0.309 lb
(cancel)	:	g / lb
Net Weight	:	360 g / 0.794 lb

a	:	30 mm
D	:	60 mm
Sd	:	0.00283 m <sup>2</sup>
Zn	:	8 Ω
Fs	:	127 Hz
Re	:	7.87 Ω
Le	:	n/a mH
Qms	:	4.00
Qes	:	0.98
Qts	:	0.79
Mms	:	1.39 g
BL	:	2.98 Telsa/m
Vas	:	1.29 L
Xmax	:	0.40 mm
Eff/η0	:	0.26 %
Cms	:	0.00115 mm/N
EBP	:	130

### Frequency Response / Impedance



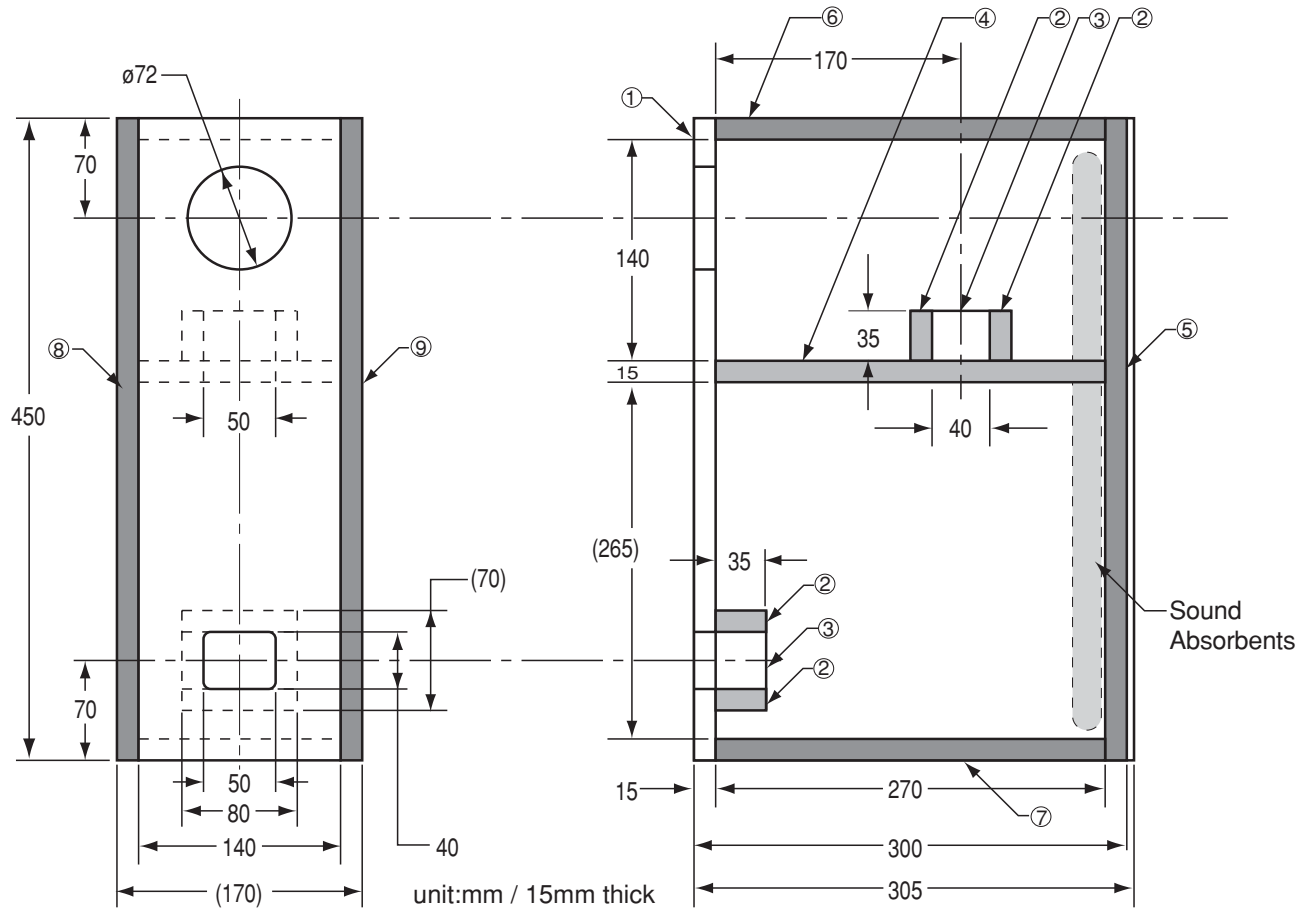
### Dimensions & Mounting Information



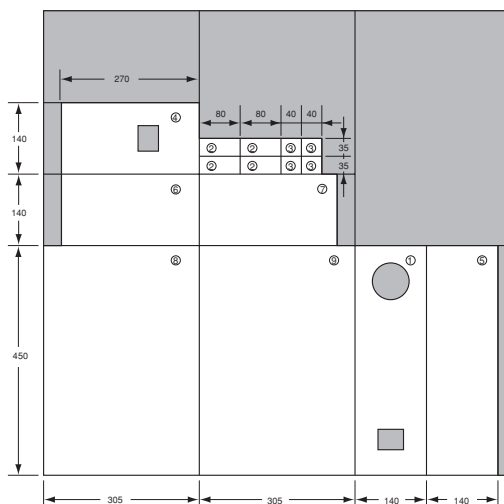
Overall Diameter	:	83 mm / 3.3 in
Baffle Hole Diameter	:	75 mm / 2.95 in
Depth	:	44 mm / 1.7 in

# FE83E

## Recommended Double Bass Reflex Type Enclosure



- This example shows a double bass reflex type enclosure for FE83E.
- The multiple bass reflex ports reproduce lower frequency.
- The first port is tuned 'Fb' to 127Hz and second port to 60Hz.
- Balanced low frequency tuning for high power handling.



## Recommended Standard Bass Reflex Type Enclosure

Example of FE83E standard bass reflex type enclosure. Internal volume is 6 liters tuned to approximately 90Hz (Fb).

